

OIL BAR

Oil Bar Stencil Slim, as with many of Round's typefaces, is a variant of an earlier font created for a specific purpose or series of works. The parent typeface is repurposed through slight modifications. While the original typeface, Wunder Font Light Structural was designed to be built as structures/sculptures, Oil Bar Stencil Slim was conceived for the specific use of applying texts in oil bar to surfaces such as linen or canvas. Prior to its translation to a computer/TrueType font, the typeface was designed for and made as physical stencils, each character having the same specific size and unique weight determined by and scaled to the exact measurements of the small oil stick. Each letter of the stencils measuring precisely 200mm x 130.625mm. This uniformity of character facilitates the font to function as a modular system made to be placed onto an evenly spaced grid. The combination grid, text and typeface approximates a semi automatic compositional tool. Few works were executed in the slim version of Round's Oil Bar Stencil typeface as manufacture of the smaller artists' oil bars ceased shortly after the stencils were produced.

CHARACTERS IN COMPLETE FONT

A	B	C	D	E
F	G	H	I	J
K	L	M	N	O
P	Q	R	S	T
U	V	W	X	Y
Z	1	2	3	4
5	6	7	8	9
[[]	/	\

[] I L

POINT 84

[] I L

POINT 72

[] I L

POINT 60

[] I L B

POINT 48

[] I L B A R

POINT 36

[] I L B A R

POINT 30

[] I L B A R

POINT 24

[] I L B A R

POINT 18

[] I L B A R

POINT 14

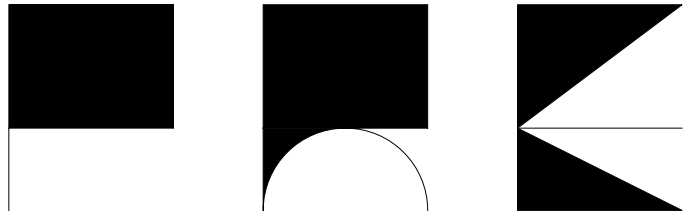
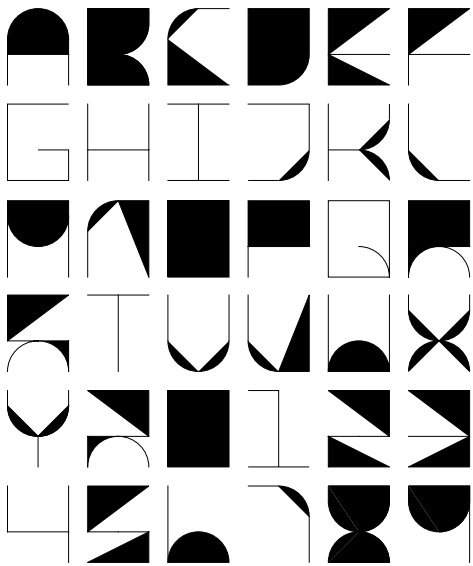
[] I L B A R

POINT 12

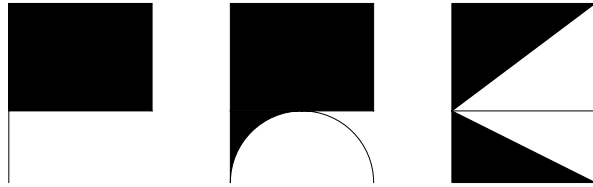
PRE FONT

Titled Pre after the three characters first created, the font is both an artwork in itself and a system used within other works. Pre Font Ultra-Black has a singular case, character proportion and spacing. The characters were all designed upon a simple grid of twenty squares arranged into a vertical rectangle with the ratio 5:4. The lines of the typeface are restricted to a palette of horizontal and vertical straight lines and circular arcs. Junctions or ends of both straight and curved lines are occasionally joined with diagonal interconnections. All enclosed spaces are filled in, painted black. The defining characteristic of Pre Font Ultra-Black is the use of very light lines and the solid black geometric shapes that they support and frame. While the font was originally designed and developed on a computer, since 2007 Round has drawn it onto paper, canvas and gallery walls solely by hand. Sentences are applied to 2-dimensional surfaces in pigment ink and paint, set on a framework of pencil lines without spaces between words.

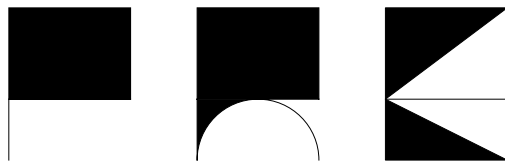
CHARACTERS IN COMPLETE FONT



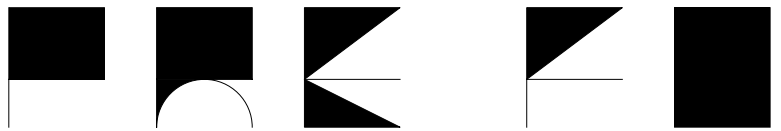
POINT 84



POINT 72



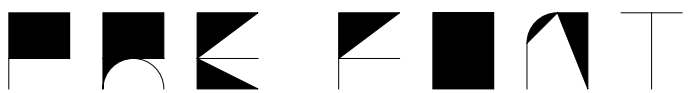
POINT 60



POINT 48



POINT 36



POINT 30



POINT 24



POINT 18



POINT 14



POINT 12